

THIS MAP IS FURNISHED FOR INFORMATION PURPOSES ONLY TO ASSIST IN PROPERTY LOCATION WITH REFERENCE TO STREETS AND OTHER PARCELS. NO REPRESENTATION IS MADE AS TO ACCURACY, AND FLATHEAD PREMIER TITLE ASSUMES NO LIABILITY FOR ANY LOSS OCCURRING BY REASON OF RELIANCE THEREON.

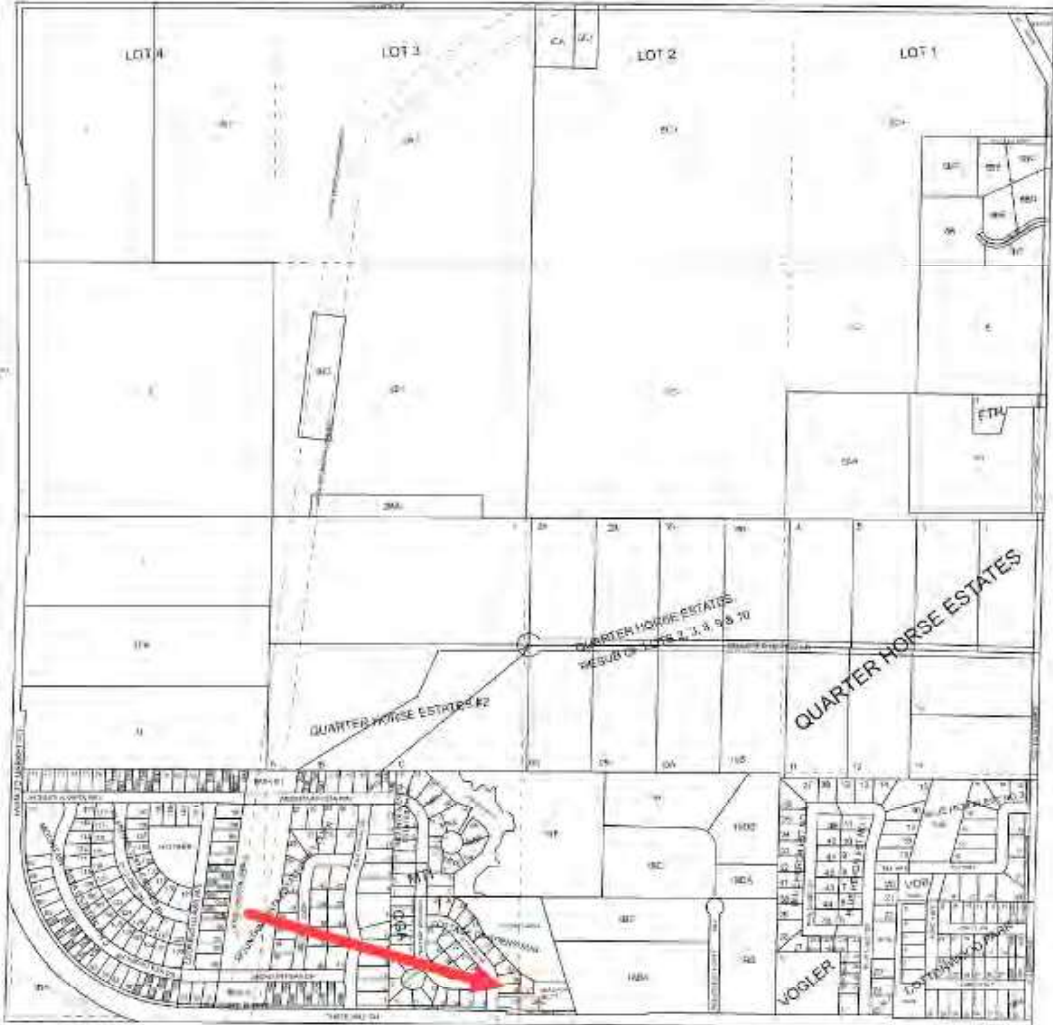
# 2 28 22

SCALE 1" = 400'



THIS MAP IS PREPARED ONLY FOR THE ADMINISTRATIVE USE OF FLATHEAD COUNTY AND IS NOT NECESSARILY AN ACCURATE REPRESENTATION OF THE LOCATION OR EXISTENCE OF TRACTS OF RECORD, THEIR BOUNDARIES OR EASEMENTS AND ROADWAYS.

- LEGEND**
- 1. UNIMPROVED CORNER
  - 2. UNIMPROVED EASEMENT
  - 3. UNIMPROVED EASEMENT
  - 4. UNIMPROVED EASEMENT
  - 5. UNIMPROVED EASEMENT
  - 6. UNIMPROVED EASEMENT
  - 7. UNIMPROVED EASEMENT
  - 8. UNIMPROVED EASEMENT
  - 9. UNIMPROVED EASEMENT
  - 10. UNIMPROVED EASEMENT
  - 11. UNIMPROVED EASEMENT
  - 12. UNIMPROVED EASEMENT
  - 13. UNIMPROVED EASEMENT
  - 14. UNIMPROVED EASEMENT
  - 15. UNIMPROVED EASEMENT
  - 16. UNIMPROVED EASEMENT
  - 17. UNIMPROVED EASEMENT
  - 18. UNIMPROVED EASEMENT
  - 19. UNIMPROVED EASEMENT
  - 20. UNIMPROVED EASEMENT
  - 21. UNIMPROVED EASEMENT
  - 22. UNIMPROVED EASEMENT
  - 23. UNIMPROVED EASEMENT
  - 24. UNIMPROVED EASEMENT
  - 25. UNIMPROVED EASEMENT
  - 26. UNIMPROVED EASEMENT
  - 27. UNIMPROVED EASEMENT
  - 28. UNIMPROVED EASEMENT
  - 29. UNIMPROVED EASEMENT
  - 30. UNIMPROVED EASEMENT
  - 31. UNIMPROVED EASEMENT
  - 32. UNIMPROVED EASEMENT
  - 33. UNIMPROVED EASEMENT
  - 34. UNIMPROVED EASEMENT
  - 35. UNIMPROVED EASEMENT
  - 36. UNIMPROVED EASEMENT
  - 37. UNIMPROVED EASEMENT
  - 38. UNIMPROVED EASEMENT
  - 39. UNIMPROVED EASEMENT
  - 40. UNIMPROVED EASEMENT
  - 41. UNIMPROVED EASEMENT
  - 42. UNIMPROVED EASEMENT
  - 43. UNIMPROVED EASEMENT
  - 44. UNIMPROVED EASEMENT
  - 45. UNIMPROVED EASEMENT
  - 46. UNIMPROVED EASEMENT
  - 47. UNIMPROVED EASEMENT
  - 48. UNIMPROVED EASEMENT
  - 49. UNIMPROVED EASEMENT
  - 50. UNIMPROVED EASEMENT
  - 51. UNIMPROVED EASEMENT
  - 52. UNIMPROVED EASEMENT
  - 53. UNIMPROVED EASEMENT
  - 54. UNIMPROVED EASEMENT
  - 55. UNIMPROVED EASEMENT
  - 56. UNIMPROVED EASEMENT
  - 57. UNIMPROVED EASEMENT
  - 58. UNIMPROVED EASEMENT
  - 59. UNIMPROVED EASEMENT
  - 60. UNIMPROVED EASEMENT
  - 61. UNIMPROVED EASEMENT
  - 62. UNIMPROVED EASEMENT
  - 63. UNIMPROVED EASEMENT
  - 64. UNIMPROVED EASEMENT
  - 65. UNIMPROVED EASEMENT
  - 66. UNIMPROVED EASEMENT
  - 67. UNIMPROVED EASEMENT
  - 68. UNIMPROVED EASEMENT
  - 69. UNIMPROVED EASEMENT
  - 70. UNIMPROVED EASEMENT
  - 71. UNIMPROVED EASEMENT
  - 72. UNIMPROVED EASEMENT
  - 73. UNIMPROVED EASEMENT
  - 74. UNIMPROVED EASEMENT
  - 75. UNIMPROVED EASEMENT
  - 76. UNIMPROVED EASEMENT
  - 77. UNIMPROVED EASEMENT
  - 78. UNIMPROVED EASEMENT
  - 79. UNIMPROVED EASEMENT
  - 80. UNIMPROVED EASEMENT
  - 81. UNIMPROVED EASEMENT
  - 82. UNIMPROVED EASEMENT
  - 83. UNIMPROVED EASEMENT
  - 84. UNIMPROVED EASEMENT
  - 85. UNIMPROVED EASEMENT
  - 86. UNIMPROVED EASEMENT
  - 87. UNIMPROVED EASEMENT
  - 88. UNIMPROVED EASEMENT
  - 89. UNIMPROVED EASEMENT
  - 90. UNIMPROVED EASEMENT
  - 91. UNIMPROVED EASEMENT
  - 92. UNIMPROVED EASEMENT
  - 93. UNIMPROVED EASEMENT
  - 94. UNIMPROVED EASEMENT
  - 95. UNIMPROVED EASEMENT
  - 96. UNIMPROVED EASEMENT
  - 97. UNIMPROVED EASEMENT
  - 98. UNIMPROVED EASEMENT
  - 99. UNIMPROVED EASEMENT
  - 100. UNIMPROVED EASEMENT



04/20/21

THIS MAP IS FURNISHED FOR INFORMATION PURPOSES ONLY TO ASSIST IN PROPERTY LOCATION WITH REFERENCE TO STREETS AND OTHER PARCELS. NO REPRESENTATION IS MADE AS TO ACCURACY, AND FLATHEAD PREMIER TITLE ASSUMES NO LIABILITY FOR ANY LOSS OCCURRING BY REASON OF RELIANCE THEREON. 2 28 22



04/20/21

2200000022

OWNER: BRUCE H. WIEDERPREL, AN UNIQUE REALTY DEVELOPER, INC.  
BY: TDM ENGINEERING, INC.  
450 CORPORATE DRIVE SUITE 101  
KALISPELL, MT 59901  
PHONE: (406) 751-5286  
DATE: JULY 2009

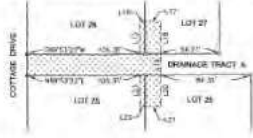
# COTTAGE GARDENS SUBDIVISION

LOCATED IN THE THE SOUTHWEST QUARTER OF THE SOUTHWEST QUARTER AND IN THE SOUTHWEST QUARTER OF THE SOUTHWEST QUARTER OF SECTION 2, TOWNSHIP 28 NORTH, RANGE 22 WEST, P.M.M., CITY OF KALISPELL, FLATHEAD COUNTY, MONTANA.

PLAN # 20090000 Abstract# 2745  
PROPOSED BY: BRUCE H. WIEDERPREL, INC.  
DATE: JULY 2009  
SCALE: 1" = 40'



### ACCESS & STORM SEWER EASEMENT DETAIL



THIS MAP IS FURNISHED FOR INFORMATION PURPOSES ONLY TO ASSIST IN PROPERTY LOCATION WITH REFERENCE TO STREETS AND OTHER PARCELS. NO REPRESENTATION IS MADE AS TO ACCURACY, AND FLATHEAD COUNTY'S BEST ASSURANCE IS MADE THAT ANY DISCREPANCY, IF KNOWN IN RELIANCE THEREON.



LINE LABEL	BEARING	DISTANCE
1	S 89° 33' 24" W	14.25'
2	S 89° 33' 24" W	14.25'
3	S 89° 33' 24" W	14.25'
4	S 89° 33' 24" W	14.25'
5	S 89° 33' 24" W	14.25'
6	S 89° 33' 24" W	14.25'
7	S 89° 33' 24" W	14.25'
8	S 89° 33' 24" W	14.25'
9	S 89° 33' 24" W	14.25'
10	S 89° 33' 24" W	14.25'
11	S 89° 33' 24" W	14.25'
12	S 89° 33' 24" W	14.25'
13	S 89° 33' 24" W	14.25'
14	S 89° 33' 24" W	14.25'
15	S 89° 33' 24" W	14.25'
16	S 89° 33' 24" W	14.25'
17	S 89° 33' 24" W	14.25'
18	S 89° 33' 24" W	14.25'
19	S 89° 33' 24" W	14.25'
20	S 89° 33' 24" W	14.25'
21	S 89° 33' 24" W	14.25'
22	S 89° 33' 24" W	14.25'
23	S 89° 33' 24" W	14.25'
24	S 89° 33' 24" W	14.25'
25	S 89° 33' 24" W	14.25'
26	S 89° 33' 24" W	14.25'
27	S 89° 33' 24" W	14.25'
28	S 89° 33' 24" W	14.25'
29	S 89° 33' 24" W	14.25'
30	S 89° 33' 24" W	14.25'
31	S 89° 33' 24" W	14.25'
32	S 89° 33' 24" W	14.25'
33	S 89° 33' 24" W	14.25'
34	S 89° 33' 24" W	14.25'

CURVE	BEARING	DELTA	MEASURED	CHORD BEARING	CHORD LENGTH
1	S 89° 33' 24" W	180°	14.25'	S 89° 33' 24" W	14.25'
2	S 89° 33' 24" W	180°	14.25'	S 89° 33' 24" W	14.25'
3	S 89° 33' 24" W	180°	14.25'	S 89° 33' 24" W	14.25'
4	S 89° 33' 24" W	180°	14.25'	S 89° 33' 24" W	14.25'
5	S 89° 33' 24" W	180°	14.25'	S 89° 33' 24" W	14.25'
6	S 89° 33' 24" W	180°	14.25'	S 89° 33' 24" W	14.25'
7	S 89° 33' 24" W	180°	14.25'	S 89° 33' 24" W	14.25'
8	S 89° 33' 24" W	180°	14.25'	S 89° 33' 24" W	14.25'
9	S 89° 33' 24" W	180°	14.25'	S 89° 33' 24" W	14.25'
10	S 89° 33' 24" W	180°	14.25'	S 89° 33' 24" W	14.25'
11	S 89° 33' 24" W	180°	14.25'	S 89° 33' 24" W	14.25'
12	S 89° 33' 24" W	180°	14.25'	S 89° 33' 24" W	14.25'
13	S 89° 33' 24" W	180°	14.25'	S 89° 33' 24" W	14.25'
14	S 89° 33' 24" W	180°	14.25'	S 89° 33' 24" W	14.25'
15	S 89° 33' 24" W	180°	14.25'	S 89° 33' 24" W	14.25'
16	S 89° 33' 24" W	180°	14.25'	S 89° 33' 24" W	14.25'
17	S 89° 33' 24" W	180°	14.25'	S 89° 33' 24" W	14.25'
18	S 89° 33' 24" W	180°	14.25'	S 89° 33' 24" W	14.25'
19	S 89° 33' 24" W	180°	14.25'	S 89° 33' 24" W	14.25'
20	S 89° 33' 24" W	180°	14.25'	S 89° 33' 24" W	14.25'
21	S 89° 33' 24" W	180°	14.25'	S 89° 33' 24" W	14.25'
22	S 89° 33' 24" W	180°	14.25'	S 89° 33' 24" W	14.25'
23	S 89° 33' 24" W	180°	14.25'	S 89° 33' 24" W	14.25'
24	S 89° 33' 24" W	180°	14.25'	S 89° 33' 24" W	14.25'
25	S 89° 33' 24" W	180°	14.25'	S 89° 33' 24" W	14.25'
26	S 89° 33' 24" W	180°	14.25'	S 89° 33' 24" W	14.25'
27	S 89° 33' 24" W	180°	14.25'	S 89° 33' 24" W	14.25'
28	S 89° 33' 24" W	180°	14.25'	S 89° 33' 24" W	14.25'
29	S 89° 33' 24" W	180°	14.25'	S 89° 33' 24" W	14.25'
30	S 89° 33' 24" W	180°	14.25'	S 89° 33' 24" W	14.25'
31	S 89° 33' 24" W	180°	14.25'	S 89° 33' 24" W	14.25'
32	S 89° 33' 24" W	180°	14.25'	S 89° 33' 24" W	14.25'
33	S 89° 33' 24" W	180°	14.25'	S 89° 33' 24" W	14.25'
34	S 89° 33' 24" W	180°	14.25'	S 89° 33' 24" W	14.25'

- LEGEND**
- STREET FRONT
  - STREET REAR
  - 10' EASEMENT (SEEKS THE PLAN THERE WITH THE BUILT DOWN EASEMENT)
  - EASEMENT (SEEKS THE PLAN)
  - NOTES AND OTHER EASEMENTS (SEEKS THE PLAN)
  - EASEMENT (SEEKS THE PLAN)
  - 5" DIA. 1/2" DEEP W/ 1/2" DIA. 1/2" DIA. (SEEKS THE PLAN)
  - 4" DIA. 1/2" DEEP W/ 1/2" DIA. 1/2" DIA. (SEEKS THE PLAN)
  - 3" DIA. 1/2" DEEP W/ 1/2" DIA. 1/2" DIA. (SEEKS THE PLAN)
  - 2" DIA. 1/2" DEEP W/ 1/2" DIA. 1/2" DIA. (SEEKS THE PLAN)
  - 1" DIA. 1/2" DEEP W/ 1/2" DIA. 1/2" DIA. (SEEKS THE PLAN)
  - 3/4" DIA. 1/2" DEEP W/ 1/2" DIA. 1/2" DIA. (SEEKS THE PLAN)
  - 1/2" DIA. 1/2" DEEP W/ 1/2" DIA. 1/2" DIA. (SEEKS THE PLAN)
  - 1/4" DIA. 1/2" DEEP W/ 1/2" DIA. 1/2" DIA. (SEEKS THE PLAN)
  - 1/8" DIA. 1/2" DEEP W/ 1/2" DIA. 1/2" DIA. (SEEKS THE PLAN)



