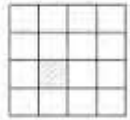


25 27 20 NESW

SCALE 1" = 100'

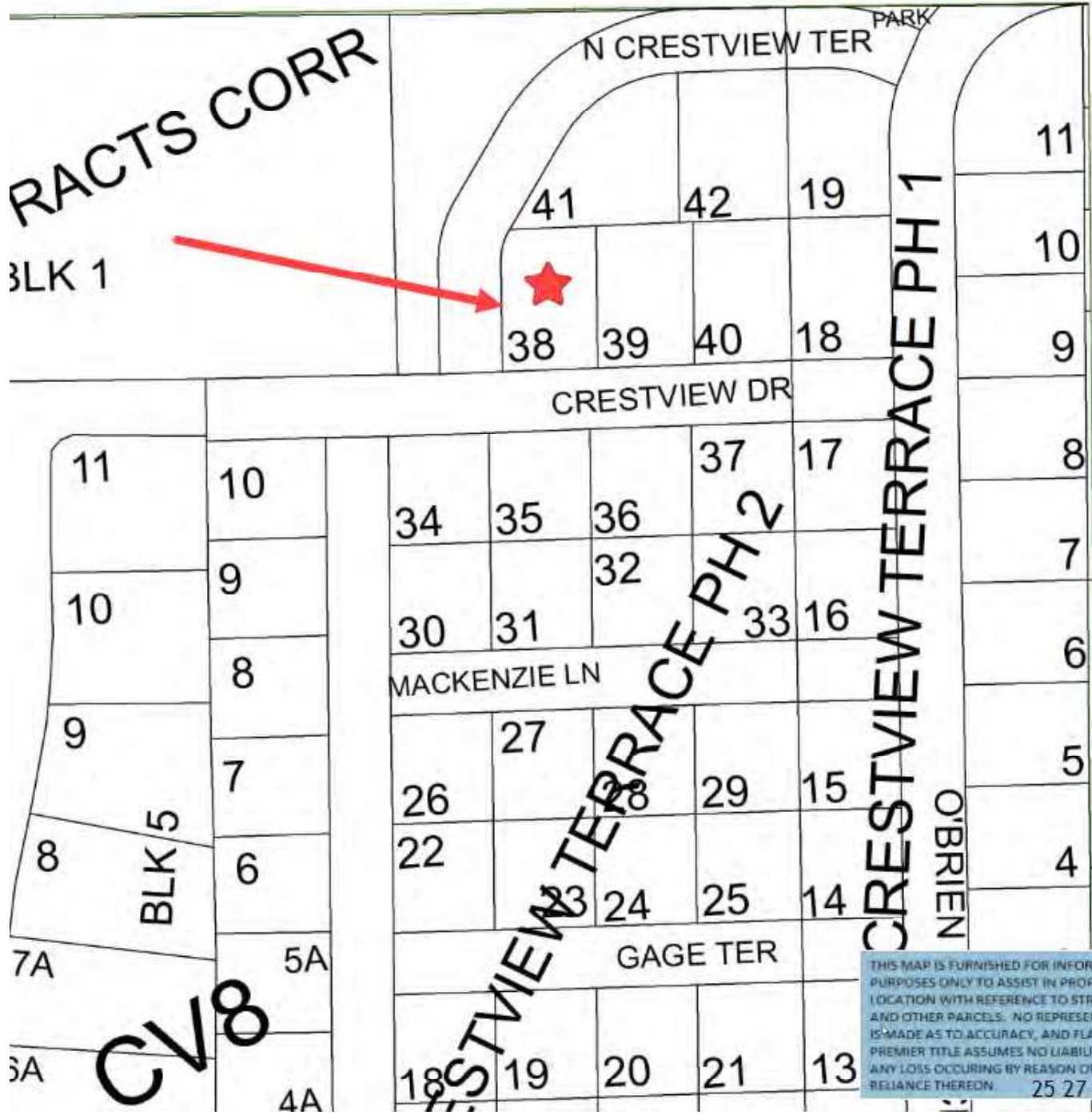


THIS MAP IS PREPARED ONLY FOR THE ADMINISTRATIVE USE OF FLATHEAD COUNTY AND IS NOT NECESSARILY AN ACCURATE REPRESENTATION OF THE LOCATION OR EXISTENCE OF TRACTS OF RECORD, THEIR BOUNDARIES OR EASEMENTS AND ROADWAYS.

- Legend**
- 1.0000 - 1.0000
 - 1.0001 - 1.0001
 - 1.0002 - 1.0002
 - 1.0003 - 1.0003
 - 1.0004 - 1.0004
 - 1.0005 - 1.0005
 - 1.0006 - 1.0006
 - 1.0007 - 1.0007
 - 1.0008 - 1.0008
 - 1.0009 - 1.0009
 - 1.0010 - 1.0010
 - 1.0011 - 1.0011
 - 1.0012 - 1.0012
 - 1.0013 - 1.0013
 - 1.0014 - 1.0014
 - 1.0015 - 1.0015
 - 1.0016 - 1.0016
 - 1.0017 - 1.0017
 - 1.0018 - 1.0018
 - 1.0019 - 1.0019
 - 1.0020 - 1.0020
 - 1.0021 - 1.0021
 - 1.0022 - 1.0022
 - 1.0023 - 1.0023
 - 1.0024 - 1.0024
 - 1.0025 - 1.0025
 - 1.0026 - 1.0026
 - 1.0027 - 1.0027
 - 1.0028 - 1.0028
 - 1.0029 - 1.0029
 - 1.0030 - 1.0030
 - 1.0031 - 1.0031
 - 1.0032 - 1.0032
 - 1.0033 - 1.0033
 - 1.0034 - 1.0034
 - 1.0035 - 1.0035
 - 1.0036 - 1.0036
 - 1.0037 - 1.0037
 - 1.0038 - 1.0038
 - 1.0039 - 1.0039
 - 1.0040 - 1.0040
 - 1.0041 - 1.0041
 - 1.0042 - 1.0042
 - 1.0043 - 1.0043
 - 1.0044 - 1.0044
 - 1.0045 - 1.0045
 - 1.0046 - 1.0046
 - 1.0047 - 1.0047
 - 1.0048 - 1.0048
 - 1.0049 - 1.0049
 - 1.0050 - 1.0050
 - 1.0051 - 1.0051
 - 1.0052 - 1.0052
 - 1.0053 - 1.0053
 - 1.0054 - 1.0054
 - 1.0055 - 1.0055
 - 1.0056 - 1.0056
 - 1.0057 - 1.0057
 - 1.0058 - 1.0058
 - 1.0059 - 1.0059
 - 1.0060 - 1.0060
 - 1.0061 - 1.0061
 - 1.0062 - 1.0062
 - 1.0063 - 1.0063
 - 1.0064 - 1.0064
 - 1.0065 - 1.0065
 - 1.0066 - 1.0066
 - 1.0067 - 1.0067
 - 1.0068 - 1.0068
 - 1.0069 - 1.0069
 - 1.0070 - 1.0070
 - 1.0071 - 1.0071
 - 1.0072 - 1.0072
 - 1.0073 - 1.0073
 - 1.0074 - 1.0074
 - 1.0075 - 1.0075
 - 1.0076 - 1.0076
 - 1.0077 - 1.0077
 - 1.0078 - 1.0078
 - 1.0079 - 1.0079
 - 1.0080 - 1.0080
 - 1.0081 - 1.0081
 - 1.0082 - 1.0082
 - 1.0083 - 1.0083
 - 1.0084 - 1.0084
 - 1.0085 - 1.0085
 - 1.0086 - 1.0086
 - 1.0087 - 1.0087
 - 1.0088 - 1.0088
 - 1.0089 - 1.0089
 - 1.0090 - 1.0090
 - 1.0091 - 1.0091
 - 1.0092 - 1.0092
 - 1.0093 - 1.0093
 - 1.0094 - 1.0094
 - 1.0095 - 1.0095
 - 1.0096 - 1.0096
 - 1.0097 - 1.0097
 - 1.0098 - 1.0098
 - 1.0099 - 1.0099
 - 1.0100 - 1.0100



THIS MAP IS FURNISHED FOR INFORMATION PURPOSES ONLY TO ASSIST IN PROPERTY LOCATION WITH REFERENCE TO STREETS AND OTHER PARCELS. NO REPRESENTATION IS MADE AS TO ACCURACY, AND FLATHEAD PREMIER TITLE ASSUMES NO LIABILITY FOR ANY LOSS OCCURRING BY REASON OF RELIANCE THEREON.



BY: SANDS SURVEYING, INC.
5 VILLAGE LODGE
KALISPELL, MT 59901
PH: (406) 735-6400
DATE: APRIL 30, 2002
JOB NO. 22304 DWG. 03370
FOR: CHACK BERLUS
OWNER: CRESTVIEW REALTY CORP
A RESIDENT CORPORATION

PLAT OF
CRESTVIEW TERRACE, PHASE 2,
AN AMENDED PLAT OF 2nd STREET, A PORTION OF 1st STREET, A PORTION OF
LOT 1, BLOCK 2, A PORTION OF LOTS 1, 2, 3 & 4, BLOCK 3, and A PORTION OF
LOT 4 & LOTS 1, 2 & 3, BLOCK 4, OF THE CORRECTED KILDARE TRACTS IN THE
E1/2SW1/4 SEC. 25, T.27N, R.20W, PM, M, FLATHEAD COUNTY, MONTANA

CERTIFICATE OF SURVEY
I, the undersigned, SANDS SURVEYING, INC., a duly licensed land surveyor in the State of Montana, do hereby certify that the foregoing plat was prepared by me or under my direct supervision and that I am a duly licensed land surveyor in the State of Montana, and that the same has been filed for record in the public records of Flathead County, Montana, in accordance with the provisions of the laws of said State.



LEGEND
○ CENTER CORNER OR MONUMENT
□ TOWER OR BENCH OR MONUMENT
● SET OF MONUMENT OR MONUMENT
○ SET OF MONUMENT OR MONUMENT
□ MONUMENT OR MONUMENT

Table with 2 columns: Station, Bearing, Distance. Lists survey points and measurements.

THIS MAP IS FURNISHED FOR INFORMATION
PURPOSES ONLY TO ASSIST IN PROPERTY
LOCATION WITH REFERENCE TO STREETS
AND OTHER PARCELS. NO REPRESENTATION
IS MADE AS TO ACCURACY, AND FLATHEAD
PREMIER TITLE ASSUMES NO LIABILITY FOR
ANY LOSS OCCURRING BY REASON OF
RELIANCE THEREON.

CERTIFICATE OF CORRECTED SURVEY
I, the undersigned, SANDS SURVEYING, INC., a duly licensed land surveyor in the State of Montana, do hereby certify that the foregoing plat was prepared by me or under my direct supervision and that I am a duly licensed land surveyor in the State of Montana, and that the same has been filed for record in the public records of Flathead County, Montana, in accordance with the provisions of the laws of said State.

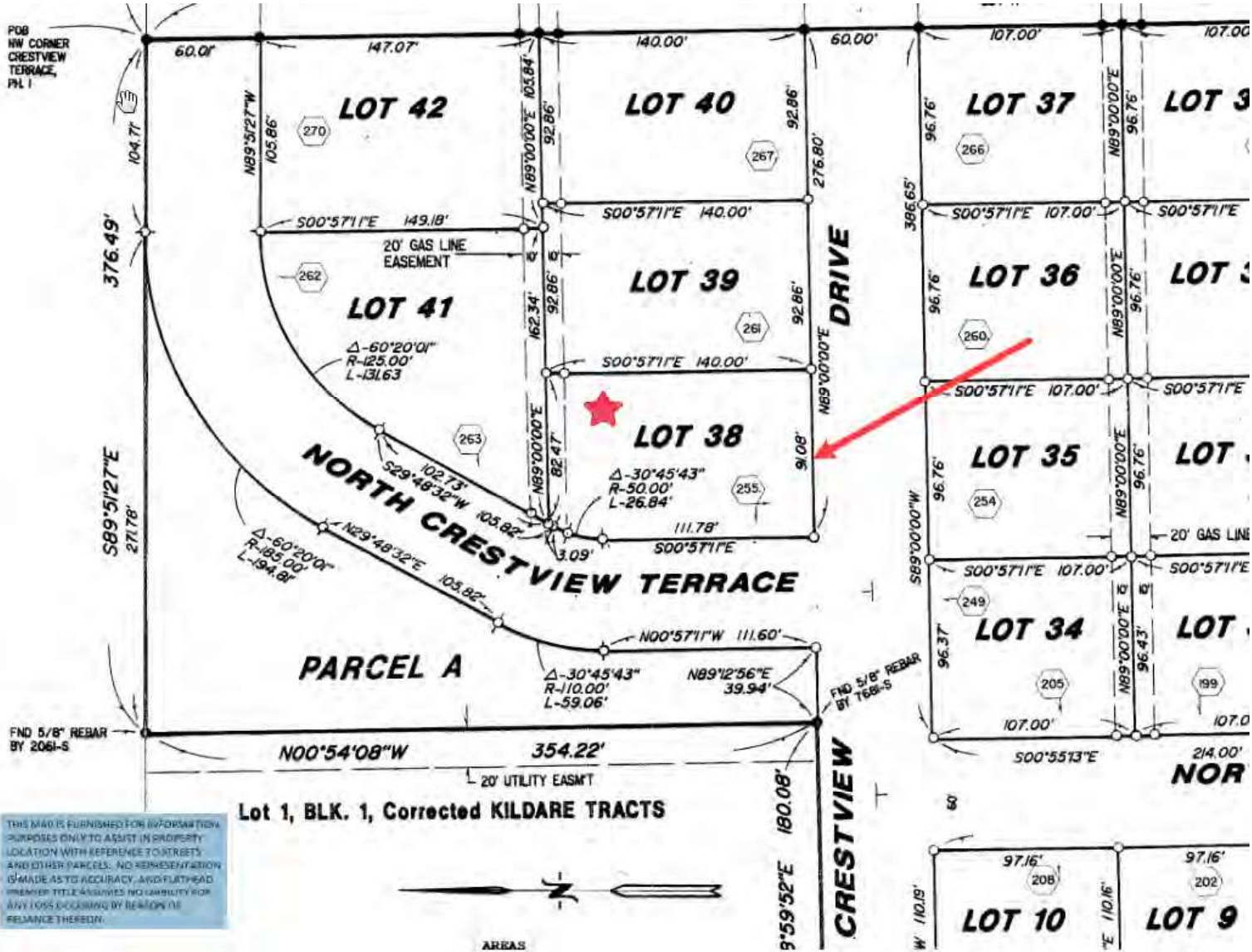
STATE AND COUNTY CERTIFICATE
I, the undersigned, SANDS SURVEYING, INC., a duly licensed land surveyor in the State of Montana, do hereby certify that the foregoing plat was prepared by me or under my direct supervision and that I am a duly licensed land surveyor in the State of Montana, and that the same has been filed for record in the public records of Flathead County, Montana, in accordance with the provisions of the laws of said State.

STATE OF MONTANA
COUNTY OF FLATHEAD
I, the undersigned, SANDS SURVEYING, INC., a duly licensed land surveyor in the State of Montana, do hereby certify that the foregoing plat was prepared by me or under my direct supervision and that I am a duly licensed land surveyor in the State of Montana, and that the same has been filed for record in the public records of Flathead County, Montana, in accordance with the provisions of the laws of said State.

CERTIFICATE OF SURVEY
I, the undersigned, SANDS SURVEYING, INC., a duly licensed land surveyor in the State of Montana, do hereby certify that the foregoing plat was prepared by me or under my direct supervision and that I am a duly licensed land surveyor in the State of Montana, and that the same has been filed for record in the public records of Flathead County, Montana, in accordance with the provisions of the laws of said State.

SHEET 1 OF 1 SURVEY

POB
NW CORNER
CRESTVIEW
TERRACE,
PL 1



THIS MAP IS FURNISHED FOR INFORMATIONAL PURPOSES ONLY TO ASSIST IN PROPERTY LOCATION WITH REFERENCE TO STREETS AND OTHER PARCELS. NO REPRESENTATION IS MADE AS TO ACCURACY, AND PLATHEAD PREMIER TITLE ASSURES NO LIABILITY FOR ANY LOSS OCCURRING BY RELIANCE THEREON.



AREAS