



For: Moose Creek Crossing, LLC  
Date: 04/14/2008  
Job: 2007

A Subdivision Plat of  
**MOOSE CROSSING**  
E1/2 SECTION 28, T.31 N., R.20 W., P.M.M. &  
SE1/4 SECTION 21, T.31 N., R.20 W., P.M.M.  
FLAHEAD COUNTY, MONTANA



THIS MAP IS FURNISHED FOR INFORMATION PURPOSES ONLY TO ASSIST IN PROPERTY LOCATIONS WITH REFERENCE TO STREETS AND OTHER PARCELS. NO REPRESENTATION IS MADE AS TO ACCURACY, AND FLATHEAD PROVIDES THIS ACCURACY NO LIABILITY FOR ANY LOSS OCCURRING BY REASON OF RELIANCE THEREON.



SECTION 28, T.31 N., R.20 W., P.M.M.  
SECTION 21, T.31 N., R.20 W., P.M.M.

1. The subdivision property shown on this plat is located in the SE1/4 of Section 21, T.31 N., R.20 W., P.M.M. and the E1/2 of Section 28, T.31 N., R.20 W., P.M.M., both in Flathead County, Montana. The total area of the subdivision is 112.00 acres, more or less, as shown on this plat. The subdivision is being platted for the purpose of subdividing the property into lots for residential purposes. The subdivision is being platted in accordance with the provisions of the Montana Subdivision Act, Chapter 10, Title 70, M.C.A., and the rules and regulations of the Montana Board of Land and Water Conservation, Chapter 10, Title 70, M.C.A.R.

2. The subdivision is being platted in accordance with the provisions of the Montana Subdivision Act, Chapter 10, Title 70, M.C.A., and the rules and regulations of the Montana Board of Land and Water Conservation, Chapter 10, Title 70, M.C.A.R.

3. The subdivision is being platted in accordance with the provisions of the Montana Subdivision Act, Chapter 10, Title 70, M.C.A., and the rules and regulations of the Montana Board of Land and Water Conservation, Chapter 10, Title 70, M.C.A.R.

4. The subdivision is being platted in accordance with the provisions of the Montana Subdivision Act, Chapter 10, Title 70, M.C.A., and the rules and regulations of the Montana Board of Land and Water Conservation, Chapter 10, Title 70, M.C.A.R.

5. The subdivision is being platted in accordance with the provisions of the Montana Subdivision Act, Chapter 10, Title 70, M.C.A., and the rules and regulations of the Montana Board of Land and Water Conservation, Chapter 10, Title 70, M.C.A.R.

6. The subdivision is being platted in accordance with the provisions of the Montana Subdivision Act, Chapter 10, Title 70, M.C.A., and the rules and regulations of the Montana Board of Land and Water Conservation, Chapter 10, Title 70, M.C.A.R.

7. The subdivision is being platted in accordance with the provisions of the Montana Subdivision Act, Chapter 10, Title 70, M.C.A., and the rules and regulations of the Montana Board of Land and Water Conservation, Chapter 10, Title 70, M.C.A.R.

8. The subdivision is being platted in accordance with the provisions of the Montana Subdivision Act, Chapter 10, Title 70, M.C.A., and the rules and regulations of the Montana Board of Land and Water Conservation, Chapter 10, Title 70, M.C.A.R.

9. The subdivision is being platted in accordance with the provisions of the Montana Subdivision Act, Chapter 10, Title 70, M.C.A., and the rules and regulations of the Montana Board of Land and Water Conservation, Chapter 10, Title 70, M.C.A.R.

10. The subdivision is being platted in accordance with the provisions of the Montana Subdivision Act, Chapter 10, Title 70, M.C.A., and the rules and regulations of the Montana Board of Land and Water Conservation, Chapter 10, Title 70, M.C.A.R.

FIG. 2 00-01-08 ADDITION 2882  
04/14/2008 10:11:24 AM  
112.00 ACRES (100%)  
112.00 ACRES (100%)  
112.00 ACRES (100%)

Survey Subdivision Block 11 228 acres  
Open Space (Parkland) - 71.41 Acres (63%)  
36.59 Acres (33%)  
Common Area (Homeowners) - 3.13 Acres (3%)  
2.46 Acres (2%)  
Open Space (Parkland) & Common Area  
designated to be divided equally among the 112 lots.  
By resolution of the Board.

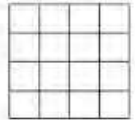
RECORD OF SURVEY  
Moose Creek Crossing  
Subdivision  
FILED 04/14/2008 10:11:24 AM  
COUNTY CLERK  
FLATHEAD COUNTY, MONTANA  
BY: [Signature]  
DATE: 04/14/2008

112.00 ACRES (100%)  
112.00 ACRES (100%)  
112.00 ACRES (100%)

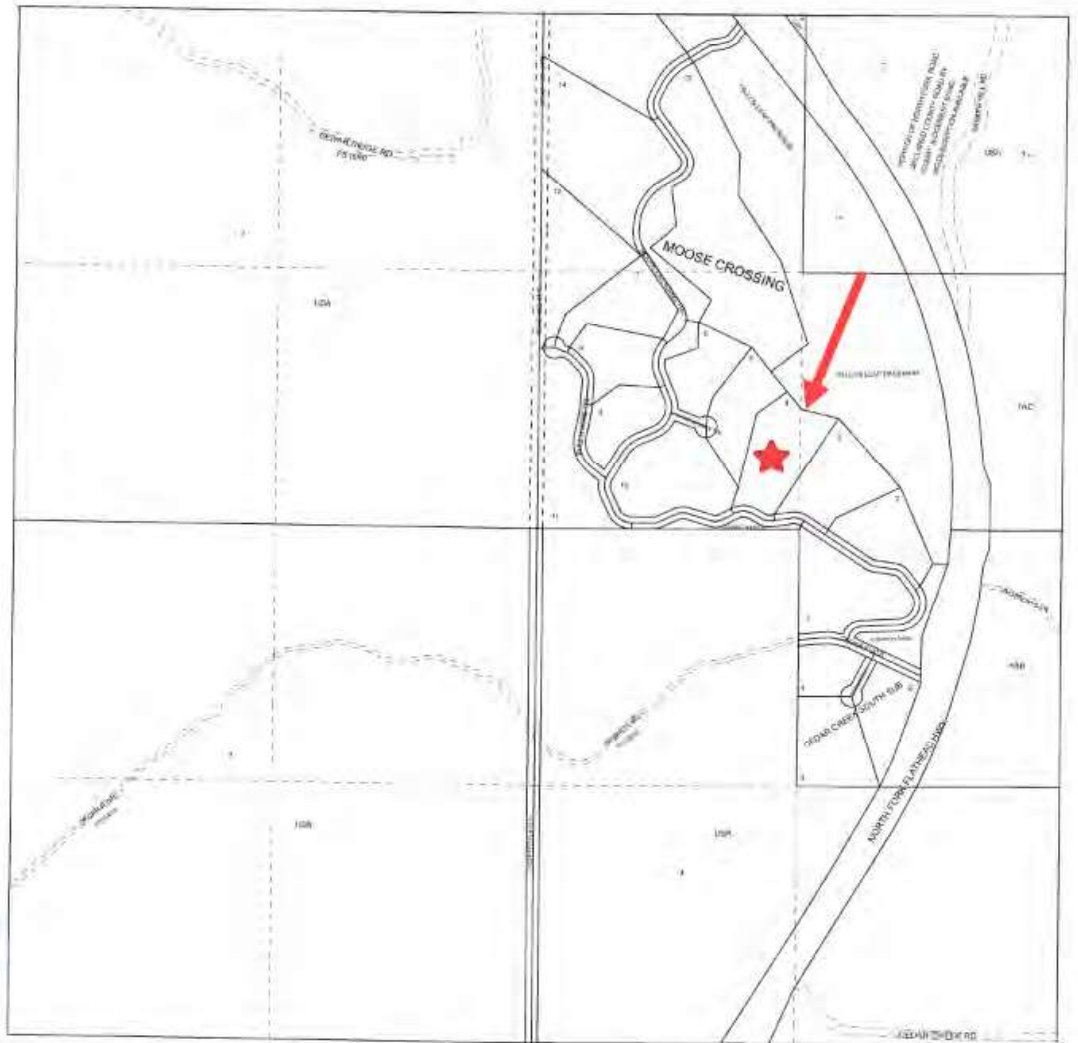


# 28 31 20

SCALE 1" = 400'



THIS MAP IS PREPARED ONLY FOR THE ADMINISTRATIVE USE OF FLATHEAD COUNTY AND IS NOT NECESSARILY AN ACCURATE REPRESENTATION OF THE LOCATION OR EXISTENCE OF TRACTS OF RECORD, THEIR BOUNDARIES OR EASEMENTS AND ROADWAYS.



1:250,000 1:500,000  
1:1,000,000 1:2,000,000  
1:4,000,000 1:8,000,000  
1:16,000,000 1:32,000,000

THIS MAP IS FURNISHED FOR INFORMATION PURPOSES ONLY TO ASSIST IN PROPERTY LOCATION WITH REFERENCE TO STREETS AND OTHER PARCELS. NO REPRESENTATION IS MADE AS TO ACCURACY, AND FLATHEAD PREMIER TITLE ASSUMES NO LIABILITY FOR ANY LOSS OCCURRING BY REASON OF RELIANCE THEREON.

THIS MAP IS FURNISHED FOR INFORMATION PURPOSES ONLY TO ASSIST IN PROPERTY LOCATION WITH REFERENCE TO STREETS AND OTHER PARCELS. NO REPRESENTATION IS MADE AS TO ACCURACY, AND FLATHEAD PREMIER TITLE ASSUMES NO LIABILITY FOR ANY LOSS OCCURRING BY REASON OF RELIANCE THEREON. 28 31 20

